



# Local Climate Adaptive Living Facility (LoCAL)

## Financing locally led adaptation



Co-funded by the European Union



Belgium partner in development



MINISTRY OF FOREIGN AFFAIRS OF DENMARK



Sweden Sverige

**giz** Deutsche Gesellschaft für Internationale Zusammenarbeit (GIZ) GmbH



THE GOVERNMENT OF THE GRAND DUCHY OF LUXEMBOURG Ministry of Foreign and European Affairs



NEW ZEALAND FOREIGN AFFAIRS & TRADE Manatū Aorere



Norway



Schweizerische Eidgenossenschaft Confédération suisse Confederazione Svizzera Confederaziun svizra

Swiss Cooperation Office in Mozambique



Australian Aid



Generalitat de Catalunya Government of Catalonia

# Bridging the finance and capacity gap

**The global climate crisis demands local action** because the impacts of climate change are most acutely experienced at the community level, where we live, work and go to school. Local governments can be a powerful ally in promoting climate change adaptation and building resilient communities because they:

- **Understand local needs** and are on the front line of climate change adaptation action

## How LoCAL works

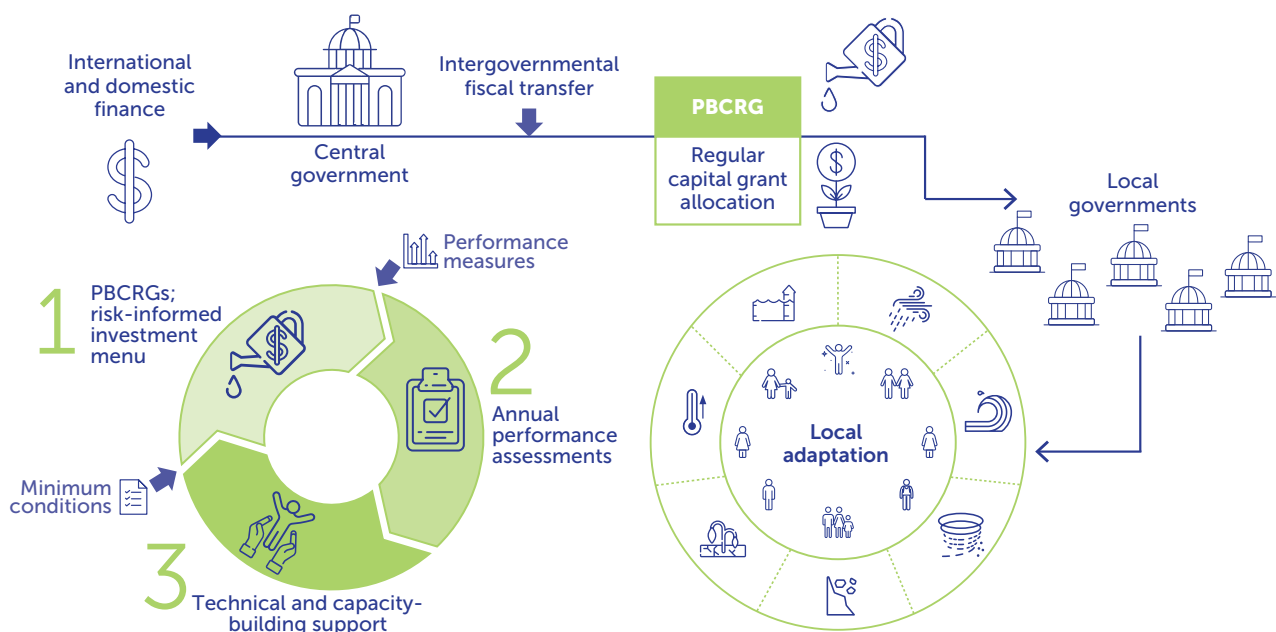
LoCAL is a **standard, internationally recognized mechanism** designed and managed by the United Nations Capital Development Fund (UNCDF). LoCAL helps local government authorities in least developed countries, small island developing states and Africa access climate finance, capacity building and technical support to respond and adapt to climate change. It combines **performance-based climate resilience grants (PBCRGs)**—to programme and verify climate change expenditures at the local level while offering strong incentives for improvements in enhanced resilience—with **technical and capacity-building support**.

PBCRGs provide funds to cover the additional costs of making local investments climate resilient; these are channelled through existing government fiscal transfer systems. The grants include **minimum conditions, performance measures** and a **menu of eligible investments**.

- **Have a mandate** to undertake small to medium-sized adaptation and infrastructure investments in agriculture and irrigation, water and sanitation, transport and drainage, and natural resource management
- **Can bring together various actors** for results, including national-level institutions, civil society bodies, the private sector and decentralized government departments

Putting PBCRGs in place typically involves:

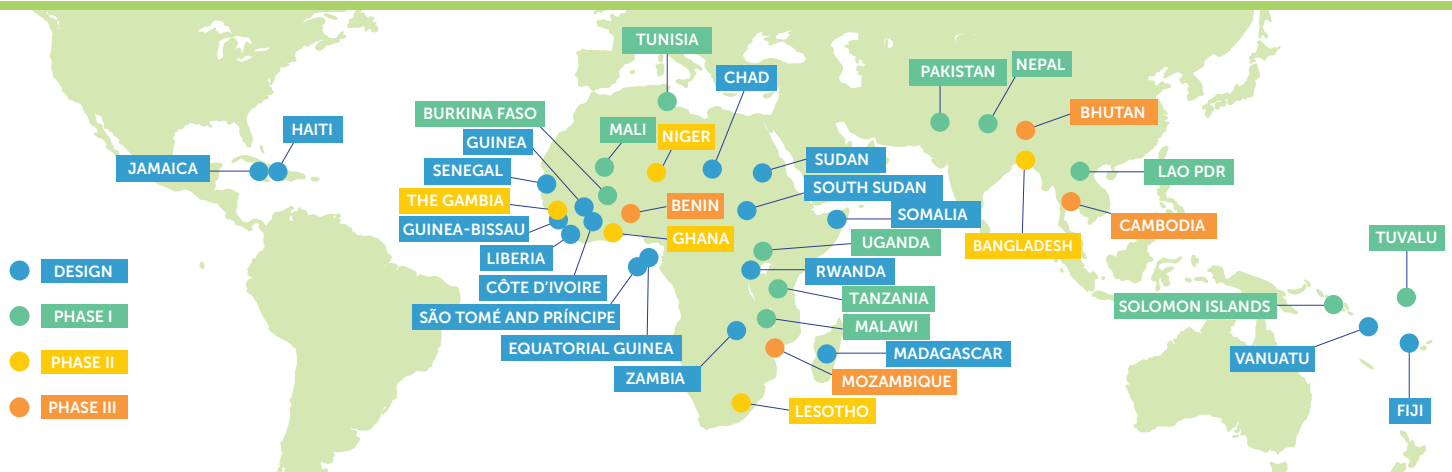
- Undertaking local climate **risk assessments** to inform adaptation planning and mainstreaming
- Integrating adaptation in a **participatory and gender-sensitive** manner into local development planning and budgeting
- Disbursing **grants** within local governments' annual planning and budgeting cycles
- Developing, selecting and implementing **adaptation measures** with a focus on nature-based solutions
- **Appraising performance** to see how resources have been used and conducting audits as part of a regular national process; these results inform the next year's allocations and support
- Providing **capacity-building and technical support activities** to identified needs at the policy, institutional and individual levels



# LoCAL phases and countries

Over 35 countries worldwide have adopted the LoCAL mechanism—with the potential to reach

more than a half-billion people. These country initiatives are at various phases of implementation:



## LoCAL action delivers local results

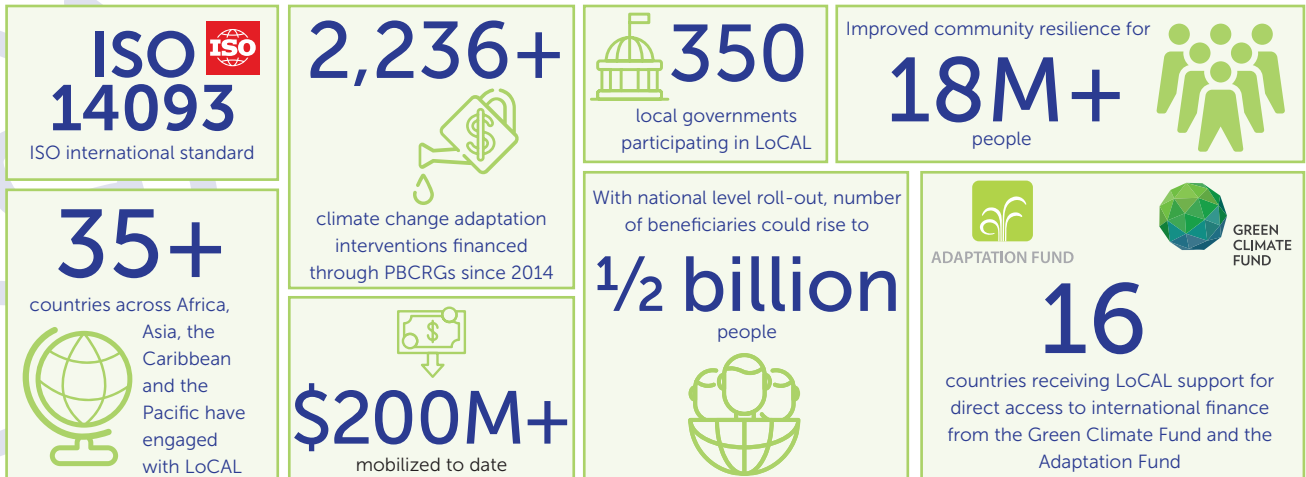
- Serves as a **proven mechanism** for the international community to channel climate change finance to the world's most remote and vulnerable regions and populations
- Recognized by the Least Developed Countries (LDCs) Expert Group of the UN Framework Convention on Climate Change as a proven **avenue for vertical integration of national adaptation plans**
- LoCAL systems and country experience provide the basis for **ISO 14093**
- Identified by the **Doha Programme of Action** as an existing initiative that can help LDCs achieve results on adaptation to climate change
- Integrates climate change **adaptation into local development planning**
- Supports **implementation of national climate change strategies**—e.g. nationally determined contributions, national adaptation plans, decentralization policies
- Builds **stronger, more transparent** government financial systems through PBCRGs
- Enables **community participation** in local development planning, implementation and monitoring
- Prioritizes **needs of women and youths**, so climate finance benefits those needing it most
- Contributes to climate-related Sustainable Development Goals and local economic **development**, particularly in the **green economy**, stimulating job creation as well as micro, small and medium-sized enterprises
- Helps countries earn **accreditation** to access international climate funds
- Strengthens climate change adaptation **monitoring and reporting**



LoCAL responds to the **Paris Agreement** and contributes to achievement of the Sustainable Development Goals with concrete action at the local level. LoCAL is:

- **Systemic and scalable**, using government systems rather than project or parallel approaches
- **Flexible and sustainable**, as it is tailored to national circumstances and contextualized for local climate responses
- **Standardized**, in its design, quality assurance, monitoring and reporting

# LoCAL by the numbers



## LoCAL Ambassadors

LoCAL is owned by participating countries, with priorities defined at the annual LoCAL Board. In addition, LoCAL Ministerial Ambassadors advocate for the increased distribution of climate finance using the LoCAL Facility. LoCAL ambassadors are:

- **José Didier Tonato**, Minister of Living Environment and Sustainable Development, Benin
- **Roger Baro**, Minister of Environment, Energy, Water and Sanitation, Burkina Faso
- **Rohey John-Manjang**, Minister of Environment, Climate Change and Natural Resources, The Gambia
- **Kwaku Afriyie**, Minister for Environment, Science, Technology and Innovation, Ghana
- **Matthew Samuda**, Minister without Portfolio, Ministry of Economic Growth and Job Creation, Jamaica
- **Michael Usi**, Vice President, Malawi
- **Mamadou Samake**, Minister of Environment, Hygiene and Sustainable Development, Mali
- **Ivete Maibaze**, Minister for Land and Environment, Mozambique
- **Beatrice Atim Odwong**, Minister of Water and Environment of Uganda

## LoCAL Board



## LoCAL Technical Partners



### For more information:

- ✉ [local.facility@uncdf.org](mailto:local.facility@uncdf.org)
- 🌐 [www.uncdf.org/local](http://www.uncdf.org/local)
- ▶ [www.youtube.com/uncdf](http://www.youtube.com/uncdf)
- ✂ [@UNCDFLoCAL](https://twitter.com/UNCDFLoCAL)

Cover photo: John Rae, © UNCDF

This publication was produced with the financial support of the European Union. Its contents are the sole responsibility of UNCDF-LoCAL and do not necessarily reflect the views of its donors. The designations employed and the presentation of material on any maps herein do not imply the expression of any opinion whatsoever on the part of the Secretariat of the United Nations or UNCDF concerning the legal status of any country, territory, city or area or its authorities, or concerning the delimitation of its frontiers or boundaries.