



## Local Climate Adaptive Living Facility (LoCAL)

# Financing locally led adaptation



**It is important to act today and now against climate change. As an ambassador for LoCAL, my ambition is to mobilize international partnerships to support this mechanism. Mozambique is a witness that this is a mechanism that works.**

**– Ivete Maibaze**

Minister of Land and Environment,  
Mozambique,  
and LoCAL Ambassador



# Bridging the finance and capacity gap

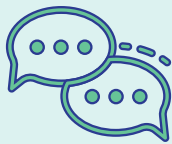
The Local Climate Adaptive Living Facility (LoCAL) helps local government authorities in developing and least developed countries access the climate finance and capacity-building and technical support they need to respond

and adapt to climate change. A standard, internationally recognized mechanism designed and hosted by the UN Capital Development Fund (UNCDF), LoCAL promotes climate change–resilient communities and local economies.

## Why local?

While much attention is given to international climate negotiations and national-level action, the impacts of climate change are most dramatically observed – and experienced – at

the local level. Local governments can be a powerful ally in promoting climate change adaptation and building resilient communities because they:



### Understand local needs

and are on the front line of climate change adaptation action



### Have a mandate

to undertake small to medium-sized adaptation and infrastructure investments – e.g. in agriculture and irrigation, water and sanitation, transport and drainage, and natural resource management



### Can bring together various actors

for results, including national-level institutions, civil society bodies, the private sector and decentralized government departments

## Why LoCAL?

LoCAL is an internationally recognized country-based mechanism that channels climate finance to local government authorities in developing countries. LoCAL responds to the Paris Agreement and contributes to achievement of the Sustainable Development Goals (SDGs) – particularly SDG 1, ending poverty; SDG 11, sustainable cities and communities; and SDG 13, combating climate change and its impacts – with concrete action at the local level.

LoCAL is:

- ▶ **Systemic** and **scalable**, as it uses government systems rather than project or parallel approaches
- ▶ **Flexible** and **sustainable**, as it is tailored to national circumstances and contextualized for local climate responses
- ▶ **Standardized**, in its design, quality assurance, monitoring and reporting

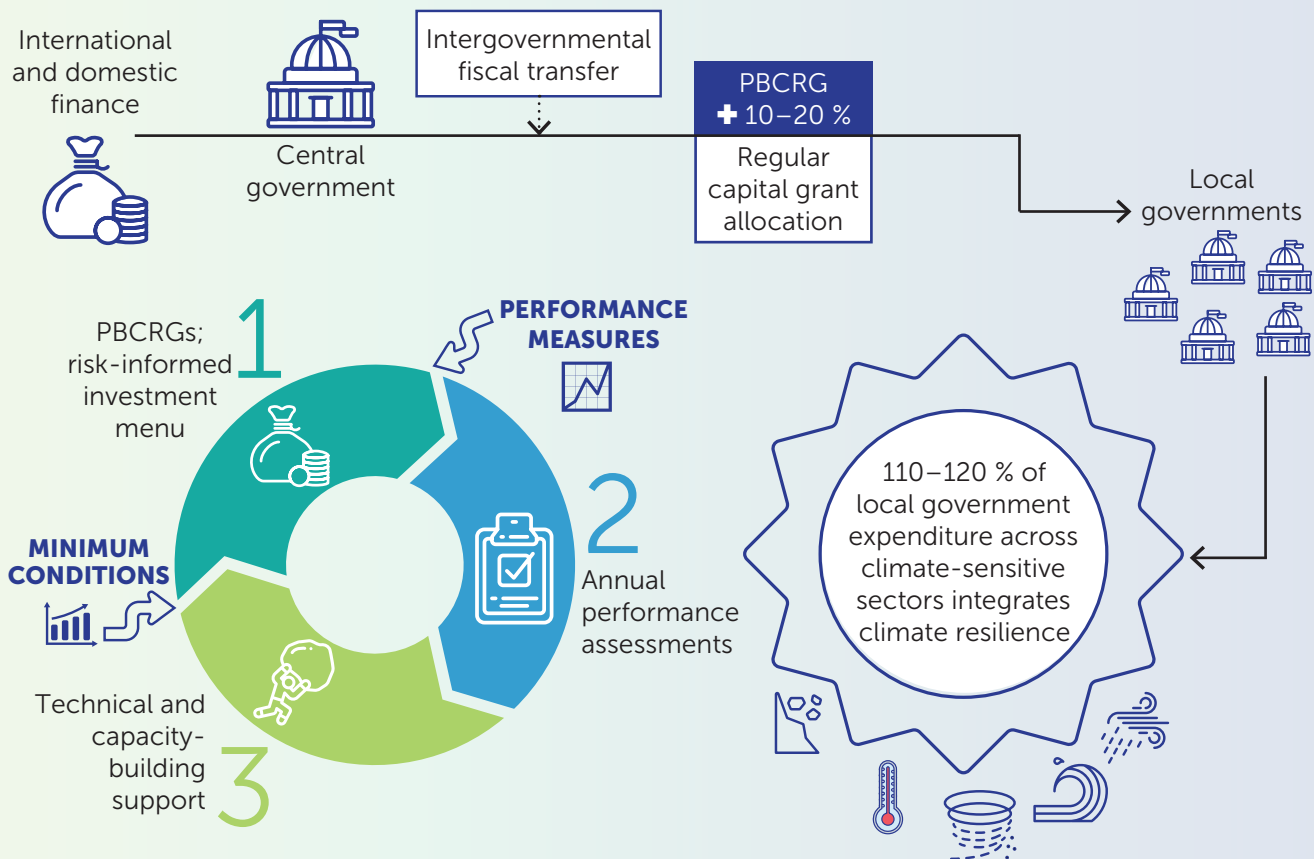


= **LoCAL**

# How LoCAL works

LoCAL combines **performance-based climate resilience grants (PBCRGs)** – which ensure programming and verification of climate change expenditures at the local level while offering

strong incentives for performance improvements in enhanced resilience – with **technical and capacity-building support**.




PBCRGs provide a financial top-up to cover the additional costs of making local investments climate resilient; these are channelled through existing government fiscal transfer systems. The grants include minimum conditions, performance measures and a menu of eligible investments. Putting them in place typically involves:

- ▶ Undertaking local climate **risk assessments** to inform adaptation planning and mainstreaming
- ▶ Integrating adaptation in a **participatory and gender-sensitive** manner in their local development planning and budgeting processes
- ▶ Disbursing **grants** in the context of local governments' annual planning and budgeting cycles
- ▶ Developing, selecting and implementing **adaptation measures**
- ▶ **Appraising performance** to determine how additional resources have been used and conducting audits as part of a regular national process; these performance results inform the next year's PBCRG allocations and capacity-building support
- ▶ Providing **capacity-building and technical support activities** to identified needs at the policy, institutional and individual levels

# Where is LoCAL?

Over 25 countries worldwide have adopted the LoCAL mechanism; country initiatives are at various phases of implementation:

 **I: Piloting** involves initiating LoCAL in 2–4 local governments over 1–2 cycles of investments, collecting lessons and fine-tuning the mechanism



**II: Consolidating** involves expanding and demonstrating LoCAL effectiveness at a larger scale, typically in over 5–10 local governments



**III: Scaling-up** is gradual nationwide roll-out of LoCAL as the national system for channelling domestic and international adaptation finance to the local level




## LoCAL action delivers local results


- ▶ Serves as **proven mechanism** for international community to channel climate change finance to world's most remote and vulnerable regions and populations
- ▶ Recognized by Least Developed Countries Expert Group of UN Framework Convention on Climate Change as proven **avenue for vertical integration of national adaptation plans** with guideline approval and forthcoming ISO certification
- ▶ Integrates climate change **adaptation into local development planning**
- ▶ Supports **implementation of national climate change strategies**, such as nationally determined contributions, national adaptation plans and decentralization policies
- ▶ Builds **stronger and more transparent** government financial systems through PBCRGs
- ▶ Enables **community participation** in local development planning, implementation and monitoring
- ▶ Prioritizes **needs of women and youths**, so climate finance benefits those needing it most
- ▶ Contributes to climate-related SDGs and local economic **development**, particularly in the **green economy**, stimulating job creation as well as micro, small and medium enterprises
- ▶ Helps countries earn **accreditation** to access international climate funds
- ▶ Strengthens climate change adaptation **monitoring and reporting**

# LoCAL by the numbers


**25+**  
countries




across Africa, Asia and the Pacific




have engaged LoCAL

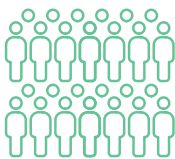


  
**304**  
local governments participating in LoCAL


**1,600+**  
climate change adaptation interventions financed through PBCRGs





Improved community resilience for **11.5** million+ people







With roll-out at the national level, the number of beneficiaries could rise to more than **500** million people



**13**  
countries receiving LoCAL support for direct access to international finance from the Green Climate Fund and the Adaptation Fund

## For more information:

-  [LoCAL.Facility@uncdf.org](mailto:LoCAL.Facility@uncdf.org)
-  [www.uncdf.org/local](http://www.uncdf.org/local)
-  [www.youtube.com/local-uncdf](http://www.youtube.com/local-uncdf)
-  @UNCDFLoCAL



## LoCAL Partners



## LoCAL Board Observers



## LoCAL Board



Cover photo: LoGIC Project (Bangladesh); inside photos: Mozambique, Helvisney dos Reis Cardoso © UNCDF/Mozambique

This publication was produced with the financial support of the European Union. Its contents are the sole responsibility of UNCDF-LoCAL and do not necessarily reflect the views of its donors. The designations employed and the presentation of material on any maps herein do not imply the expression of any opinion whatsoever on the part of the Secretariat of the United Nations or UNCDF concerning the legal status of any country, territory, city or area or its authorities, or concerning the delimitation of its frontiers or boundaries.